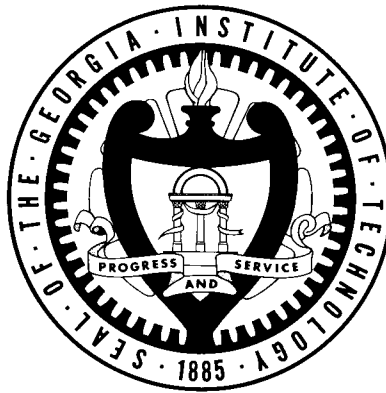




Georgia Institute of **Technology**

Annual Transfer Student Retention Study



Office of Institutional Research and Planning

Fall 2009

**Georgia Institute of Technology
Institutional Research and Planning
Annual Transfer Student Retention Study**

Institutional Research and Planning has studied the retention of undergraduate students transferring into Georgia Tech from the summer of 1998 through fall semester 2009. Cohorts have been defined as students who transferred into Georgia Tech any term summer through spring of the respective cohort year. Retention is defined as being enrolled (taking classes or coop-at-work/internship) or having graduated at each successive fall term. This report presents the retention and graduation percentages for each cohort overall and by admission status, gender, ethnicity, entering college, and other characteristics. Chi-Square tests of significance ($p \leq 0.05$) were conducted for each cohort's progression, and full tables of these comparisons are presented in an appendix.

2008-09 Transfer Cohort Profile

The 2008-09 transfer cohort experienced an overall increase in enrollment of approximately 14% over the 2007-08 transfer cohort. This is the largest percentage increase in transfer enrollment since the 2003-2004 transfer cohort.

All major ethnic categories experienced nominal increases in enrollment, with the exception of International and American Indian students. African American and Hispanic transfer students experienced 25% and 31% increases in enrollment, respectively. White students represent the majority of the transfer cohort (54%), while Asians students represent 13% and African American students represent 12%. International transfer students experienced a record-low representation in the cohort at 7%.

African American students, once comprising over 20% of transfer cohorts, represented 12% of the 2008-09 cohort – the 76 African American students in the 2008-09 cohort is a 25% increase over the 2007-08 cohort's record-low enrollment. Note that these comparisons are made using the new federally-mandated ethnicity breakouts – the appendix charts show prior-year ethnicity breakouts until the 2008-09 cohort. The general decline in African American transfer students has been a ten-year trend, further evidenced by the decreasing representation of Historically Black College's and Universities (HBCUs) in the transfer cohorts. Before 2003, over one-half of the African American students in each transfer cohort transferred from HBCUs - this number has consistently declined from 2004-05 to 29% in 2008-09. Also, the decline in the number of students participating in the College of Engineering Dual Degree program focusing on HBCUs has contributed to the decrease.

Hispanic transfer students experienced record high enrollment at 55 students in the 2008-09 transfer cohort – a 31% increase over the 2007-2008 cohort. An articulation agreement with Miami-Dade College and the GT College of Engineering, as well as increased recruiting and scholarship activities of the Hispanic Initiatives program, may have played a role in the relatively high numbers of Hispanic transfers.

While sophomore transfers outnumbered juniors until 2005-06, Juniors represented the largest part of the cohort at 53%. Sophomore transfers were at an all-time low in 2008-09, representing only 37% of the cohort.

All types of transfers increased with the exception of the GT Regional Engineering Program (GTREP) and International Transfer Program. However, growth in the GTREP program in the

**Georgia Institute of Technology
Institutional Research and Planning
Annual Transfer Student Retention Study**

2007-08 cohort was abnormally large, so the number of GTREP students in the 2008-09 cohort is in line with historical trends. Regents Engineering Transfer Program students (RETP) experienced record-high enrollment with 117 students representing 17% of the total transfer cohort.

Over 70% of transfer students transfer into the College of Engineering, and three-quarters are male. Female representation in the transfer cohort had been on a general decline until the 2008-09 cohort. However, females still only represent 23% of the cohort from a high of 32% in the 1998-99 cohort.

Ninety-three percent of the 2008-09 transfer cohort was retained to its second year. Of all students not retained from the 2008-09 cohort, 70% were in good academic standing.

**Georgia Institute of Technology
Institutional Research and Planning
Annual Transfer Student Retention Study**

Retention

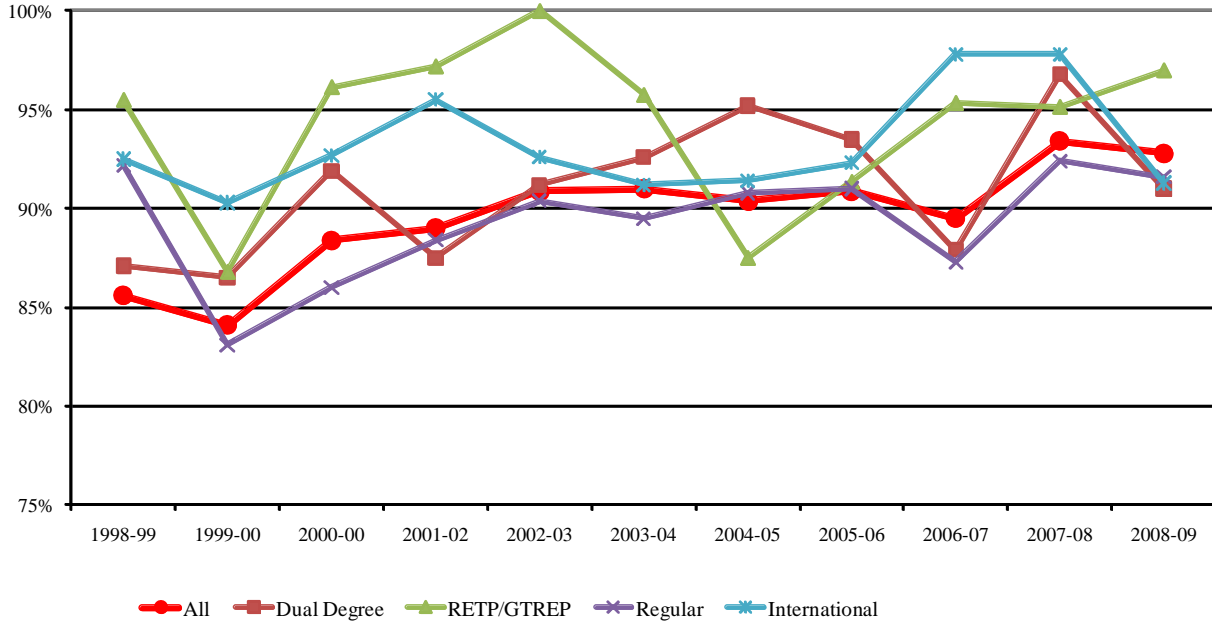
Retention to the second year varied between a low of 84% for the 1999-00 cohort and a high of 93% for the 2007-08 and 2008-09 cohorts (see Chart 1). Of all students not retained over the past 10 years, approximately 62% left Georgia Tech during their first year, and over 65% of these students left in good academic standing. Approximately 80% of transfer students were retained through four years, and 74% percent of those students not retained through four years were in good academic standing when they left.

- The largest percentage of transfer students enter as 'regular transfers' (61% for 2008-09 cohort). In more recent cohorts, the differences in retention rates by admission status have not been significant although they have been historically. Although retention rates by admission status vary throughout the years, transfer students admitted as “2nd Undergraduate” experience consistently lower retention rates and International Transfers are typically among the highest. GTREP and RETP transfers have also demonstrated consistently high retention rates, especially in the more recent cohorts.
- Females account for less than a quarter of entering transfer students. The percentage of females entering each cohort has decreased from 32% in 1998-99 to 23% in 2008-09. Female retention exceeded that of males in the 2008-09 cohort for the first time since the 2004-05 cohort. Although the difference in retention between genders was found to be statistically significant in the most recent two cohorts, this is not in line with historical trends. It may be helpful to investigate further if a difference in retention by gender continues.
- White/Caucasian students typically account for over 50% of entering transfers. As mentioned earlier, black transfer students as a percentage of the total cohort has decreased to from a high of 20% in 2000-01 to 12% in 2008-09. Black representation in the 2008-09 cohort is a slight increase over the 2007-2008 cohort. Notably, Black/African-American transfer student 2nd year retention rates were at a record-high 92% for the 2007-08 and 2008-09 cohorts indicating that, although there are fewer black students within the cohort, these students are performing well. Hispanic transfer students in the 2008-09 cohort also enjoyed their highest retention rate (95%) since 2004-05. There are few significant differences in retention by ethnicity when the small numbers of Native American and Multi-Racial students were excluded. Note that retention and percentage comparisons were made using the new federally-mandated race/ethnicity breakouts, while the appendix charts show the former method of race/ethnicity breakouts in cohorts prior to 2008-09.
- Three-fourths or more of entering transfer students major in Engineering or Computing. Retention rates varied among entering colleges from cohort to cohort with no noticeable pattern, although Architecture and Ivan Allen most often have a higher retention rate than the other colleges while Sciences experiences lower retention. Significant differences in retention rates by entering college are more commonly found during the 3rd and 4th years, if at all.
- The large majority of transfer students enter in the fall, and over three-fourths of transfer students are Georgia residents. Over 90% of transfer students are U.S. citizens. Very few significant differences by retention exist for these three areas.
- The 1999-00 – 2008-09 entering transfer cohorts were comprised, on average, of approximately 46% sophomores and 42% juniors. As noted earlier, there appears to be a general shifting of the composition of transfer cohorts from more sophomores to more juniors – juniors represented over 50% of the transfer cohort beginning in 2007-08. Junior

**Georgia Institute of Technology
Institutional Research and Planning
Annual Transfer Student Retention Study**

transfers typically experience higher retention than the other classes although there is no clear pattern of significance.

Chart 1. Transfer Cohort Retention to the Second Year, by Admit Status*



*Note: 2nd Undergrad and International Dual Degree transfers not included

**Georgia Institute of Technology
Institutional Research and Planning
Annual Transfer Student Retention Study**

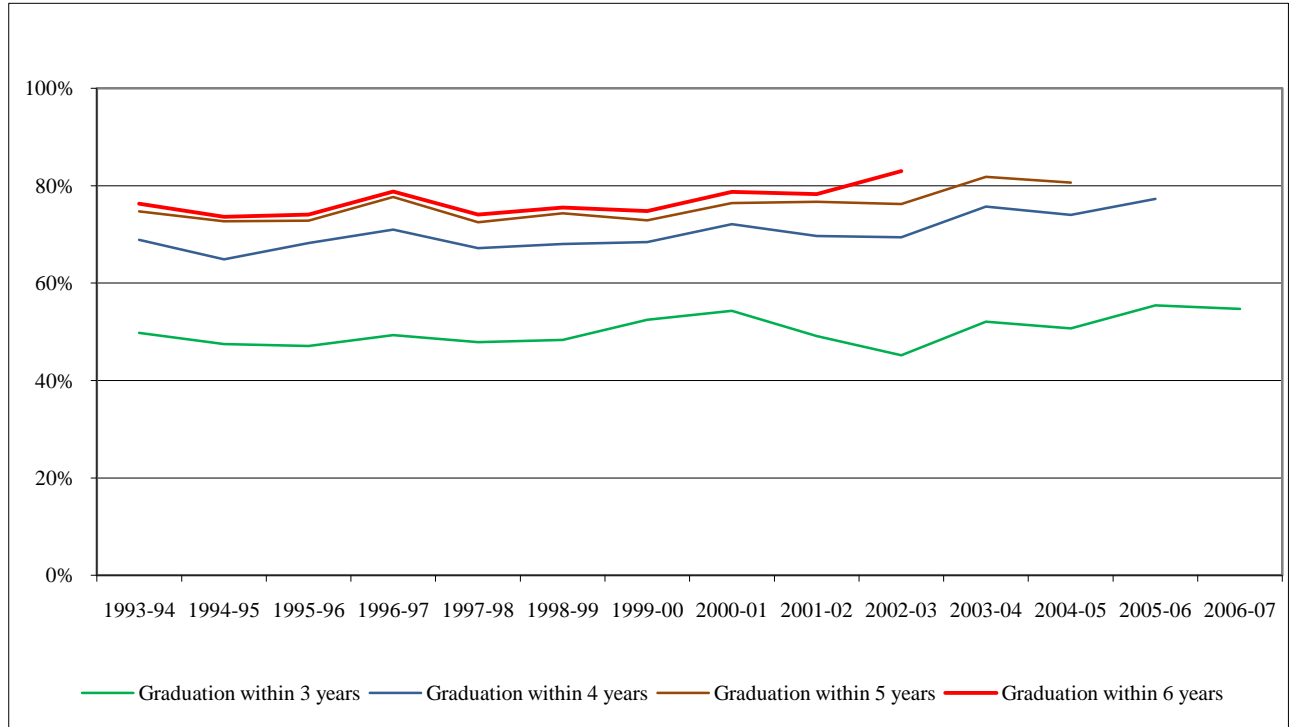
Graduation

By the end of the third year approximately half of all transfer students in each cohort had graduated, while over three-fourths of transfer students in cohorts 1998-99 through 2003-04 had graduated in six years (see Chart 2). There is only a slight difference between 5- and 6-year graduation rates of transfer students – the most significant jump in rates occurs between the second and third years. The 2003-04 cohort experienced a record-high six-year graduation rate of 83% and the 2006-07 cohort experienced a three-year graduation rate of 55%. Five-year graduation rates rose above 80% beginning with the 2003-04 cohort. Generally, graduation rates of transfer students are increasing and are on par with, or even exceed, traditional student graduation rates.

- Admission status has a significant effect on the graduation rates of transfer students. Fewer Regular transfer students graduated in five years than did other transfer students, and as with retention rates, 2nd Undergrads generally experienced lower graduation rates (the 2nd Undergrads in the 2003-04 cohort experienced an unusually high five-year graduation rate). RETP and GTREP students were among the highest four-year graduation rates.
- For earlier cohorts, females generally graduated faster and in higher percentages than males. However, the males in the 2003-04 cohort outpaced females in four-year graduation rates for the first time since the 1997-98 cohort, and have graduated in five years at higher rates than females since 2001-02 (with the exception of the 2004-05 cohort). Overall, there were minimal significant differences in graduation rates by gender. It is notable, however, that females as a percentage of the total cohort have been declining since 1998.
- When the small numbers of Native American and Multi-Racial students were excluded from analysis, there are few significant differences in graduation rates based on ethnicity. In terms of two-year graduation rates, Black/African American students have historically outpaced other ethnicities (perhaps due to their heavy representation in the dual-degree program), although this has slowed as the number of Black/African American transfer students has decreased. Hispanic students have also experienced high shorter-term graduation rates, especially in the most recent cohorts.
- There were some significant differences in graduation by entering college, but no consistent patterns emerged with the exception that transfer students within the College of Sciences typically experience the lowest five- and six-year graduation rates and that College of Management students typically graduate earlier than transfer students in other colleges.
- Transfer students participating in the co-op program experience higher graduation rates than non co-op students after three years, and participation in the co-op program seems to play a significant role in graduation rates.
- Transfer students matriculating in the fall term, transferring in as juniors or seniors, non-Georgia residents and non-U.S. citizens generally graduated at higher rates than their counterparts. In-state students in the 2003-04 cohort graduated at higher rates than out-of-state students, although this appears to be a one-year aberration.

**Georgia Institute of Technology
Institutional Research and Planning
Annual Transfer Student Retention Study**

Chart 2. Transfer Cohort Graduation Rates.



**Georgia Institute of Technology
Institutional Research and Planning
Annual Transfer Student Retention Study**

Appendix

Table 1. Retention Rates Overall.

Transfer Cohort		Retention Rates (to next Fall term)					
Year	n	2nd Yr	3rd Yr	4th Yr	5th Yr	6th Yr	7th Yr
1999-00	547	84%	78%	78%	77%	76%	77%
2000-01	623	88%	82%	80%	79%	79%	80%
2001-02	627	89%	82%	81%	80%	80%	80%
2002-03	568	91%	83%	79%	81%	79%	80%
2003-04	655	91%	85%	83%	83%	84%	84%
2004-05	720	90%	85%	82%	82%	82%	
2005-06	592	91%	88%	86%	87%		
2006-07	626	90%	86%	85%			
2007-08	572	93%	91%				
2008-09	653	93%					

Table 2. Graduation Rates Overall.

Transfer Cohort		Graduation Rates (through Summer term)				
Year	n	2 Yrs	3 Yrs	4 Yrs	5 Yrs	6 Yrs
1998-99	603	19%	48%	68%	74%	76%
1999-00	547	19%	53%	68%	73%	75%
2000-01	623	16%	54%	72%	76%	79%
2001-02	627	13%	49%	70%	77%	78%
2002-03	568	13%	45%	69%	76%	79%
2003-04	655	13%	52%	76%	82%	83%
2004-05	720	14%	51%	74%	81%	
2005-06	592	15%	55%	77%		
2006-07	626	13%	55%			
2007-08	572	16%				

**Georgia Institute of Technology
Institutional Research and Planning
Annual Transfer Student Retention Study**

Table 3. Retention Rates by Admission Status.

Transfer Cohort			Retention Rates (to next Fall term)					
Year	Status	n	2nd Yr	3 rd Yr	4th Yr	5th Yr	6th Yr	7th Yr
1999-00	Total	547	*84.1%	*77.7%	*77.5%	*76.6%	*76.2%	*76.8%
	Dual Degree	89	86.5%	77.5%	76.4%	77.5%	78.7%	77.5%
	RETP	53	86.8%	84.9%	81.1%	81.1%	81.1%	81.1%
	Regular	332	83.1%	75.6%	77.1%	76.2%	75.6%	76.2%
	2nd Undergrad.	11	45.5%	36.4%	27.3%	27.3%	27.3%	27.3%
	International	62	90.3%	90.3%	87.1%	82.3%	80.7%	82.5%
2000-01	Total	623	88.4%	82.3%	79.9%	78.8%	78.8%	79.5%
	Dual Degree	86	91.9%	80.2%	82.6%	81.4%	81.4%	82.6%
	Internat. Dual	4	100.0%	100.0%	100.0%	100.0%	100.0%	100.0%
	RETP	65	92.3%	84.6%	80.0%	80.0%	80.0%	80%
	GTREP	12	100.0%	91.7%	100.0%	100.0%	100.0%	100.0%
	Regular	385	86.0%	81.3%	77.4%	76.9%	77.1%	77.7%
	2nd Undergrad.	16	87.5%	81.3%	75.0%	75.0%	68.8%	68.8%
	International	55	92.7%	87.3%	89.1%	81.8%	81.8%	83.6%
2001-02	Total	627	*89.0%	81.8%	*80.5%	*80.2%	*80.1%	*79.7%
	Dual Degree	64	87.5%	75.0%	78.1%	78.1%	78.1%	78.1%
	Internat. Dual	7	85.7%	71.4%	85.7%	85.7%	85.7%	85.7%
	RETP	54	94.4%	83.3%	83.3%	83.3%	85.2%	83.3%
	GTREP	17	100.0%	100.0%	100.0%	100.0%	100.0%	100.00%
	Regular	396	88.4%	82.6%	80.1%	79.0%	79.0%	78.8%
	2nd Undergrad.	23	65.2%	47.8%	43.5%	52.2%	47.8%	47.8%
	International	66	95.5%	90.9%	90.9%	90.9%	89.4%	89.4%
2002-03	Total	568	90.9%	*82.9%	*79.4%	*80.6%	*79.4%	*80.3%
	Dual Degree	57	91.2%	79.0%	80.7%	78.9%	79.0%	80.7%
	Internat. Dual	2	50.0%	50.0%	50.0%	50.0%	50.0%	50.0%
	RETP	41	100.0%	95.1%	97.6%	97.6%	97.6%	97.6%
	GTREP	14	100.0%	100.0%	100.0%	100.0%	100.0%	92.9%
	Regular	354	90.4%	81.6%	76.3%	77.7%	75.7%	76.6%
	2nd Undergrad.	19	68.4%	57.9%	57.9%	57.9%	57.9%	63.2%
	International	81	92.6%	88.9%	85.2%	88.9%	88.9%	90.1%
2003-04	Total	655	91.0%	85.0%	82.6%	83.2%	83.8%	83.7%
	Dual Degree	54	92.6%	81.5%	81.5%	81.5%	81.5%	81.7%
	Internat. Dual	1	100.0%	100.0%	100.0%	100.0%	100.0%	100.0%
	RETP	65	96.9%	93.8%	93.8%	93.9%	92.3%	90.1%
	GTREP	37	94.6%	91.9%	89.2%	89.2%	89.2%	88.9%
	Regular	409	89.5%	83.6%	81.2%	81.2%	81.9%	82.1%
	2 nd Undergrad.	13	84.6%	76.9%	76.9%	76.9%	92.3%	93.6%
	International	76	91.2%	85.5%	78.9%	84.2%	84.2%	84.1%

(continued)

**Georgia Institute of Technology
Institutional Research and Planning
Annual Transfer Student Retention Study**

Table 3. Retention Rates by Admission Status (continued).

Year	Transfer Cohort		Retention Rates (to next Fall term)					
	Status	n	2nd Yr	3rd Yr	4th Yr	5th Yr	6th Yr	7th Yr
2004-05	Total	720	90.4%	*84.9%	*81.7%	*82.1%	82.2%	
	Dual Degree	42	95.2%	76.2%	81.0%	81.0%	81.4%	
	Internat. Dual	4	100.0%	100.0%	100.0%	100.0%	100.0%	
	RETP	85	90.6%	87.1%	82.4%	87.1%	85.1%	
	GTREP	45	84.4%	82.2%	82.2%	82.2%	83.4%	
	Regular	447	90.8%	85.5%	81.4%	81.2%	80.9%	
	2 nd Undergrad.	16	75.0%	56.3%	50.0%	50.0%	60.3%	
	International	81	91.4%	90.1%	87.7%	87.7%	87.8%	
2005-06	Total	592	90.9%	88.2%	85.8%	86.6%		
	Dual Degree	31	93.5%	90.3%	87.1%	89.6%		
	Internat. Dual	1	100.0%	100.0%	100.0%	100.0%		
	RETP	102	90.2%	85.2%	83.3%	84.6%		
	GTREP	40	92.5%	92.5%	92.5%	92.6%		
	Regular	356	91.0%	88.5%	85.4%	85.2%		
	2 nd Undergrad.	10	70.0%	70.0%	70.0%	75.6%		
	International	52	92.3%	90.4%	90.4%	94.0%		
2006-07	Total	626	*89.5%	*85.5%	84.5%			
	Dual Degree	33	87.9%	78.8%	78.9%			
	Internat. Dual	4	100.0%	75.0%	75.5%			
	RETP	99	92.9%	89.9%	87.7%			
	GTREP	46	97.8%	95.7%	92.9%			
	Regular	386	87.3%	83.7%	82.5%			
	2 nd Undergrad.	13	69.2%	53.8%	72.3%			
	International	45	97.8%	95.6%	93.3%			
2007-08	Total	572	*93.4%	90.6%				
	Dual Degree	31	96.8%	87.2%				
	Internat. Dual	3	100.0%	100.0%				
	RETP	89	92.1%	87.1%				
	GTREP	56	98.2%	92.7%				
	Regular	343	92.4%	90.6%				
	2 nd Undergrad.	5	60.0%	100.0%				
	International	45	97.8%	95.6%				
2008-09	Total	653	92.8%					
	Dual Degree	34	91.0%					
	Internat. Dual	9	100.0%					
	RETP	117	97.3%					
	GTREP	49	96.2%					
	Regular	395	91.6%					
	2 nd Undergrad.	12	83.3%					
	International	37	89.9%					

* significant difference ($p \leq 0.05$)

**Georgia Institute of Technology
Institutional Research and Planning
Annual Transfer Student Retention Study**

Table 4. Retention Rates by Gender.

Transfer Cohort			Retention Rates (to next Fall term)					
Year	Gender	n	2nd Yr	3rd Yr	4th Yr	5th Yr	6th Yr	7th Yr
1999-00	Total	547	84.1%	77.7%	77.5%	76.6%	76.2%	76.8%
	Female	159	81.1%	78.0%	76.7%	78.0%	77.4%	77.8%
	Male	388	85.3%	77.6%	77.8%	76.0%	75.8%	76.3%
2000-01	Total	623	88.4%	82.3%	79.9%	78.8%	78.8%	79.5%
	Female	161	91.3%	87.0%	85.1%	83.9%	83.2%	84.5%
	Male	462	87.4%	80.7%	78.1%	77.1%	77.3%	77.7
2001-02	Total	627	*89.0%	81.8%	80.5%	80.2%	80.1%	79.7%
	Female	162	83.3%	78.4%	79.0%	76.5%	76.5%	76.5%
	Male	465	91.0%	83.0%	81.1%	81.5%	81.3%	80.9%
2002-03	Total	568	90.8%	82.9%	79.4%	80.6%	76.2%	80.3%
	Female	153	90.9%	82.4%	79.2%	77.9%	77.8%	78.4%
	Male	415	90.8%	83.1%	79.5%	81.6%	80.0%	81.0%
2003-04	Total	655	91.0%	85.0%	82.6%	83.2%	83.8%	83.7%
	Female	152	88.8%	80.9%	77.0%	80.9%	82.2%	82.4%
	Male	503	91.7%	86.3%	84.3%	83.9%	84.3%	84.1%
2004-05	Total	720	90.4%	*84.9%	81.7%	82.1%	82.2%	
	Female	180	91.7%	86.1%	82.2%	83.9%	83.8%	
	Male	540	90.0%	84.4%	81.5%	81.5%	81.6%	
2005-06	Total	592	90.9%	88.2%	85.8%	86.6%		
	Female	135	89.6%	90.4%	86.7%	85.8%		
	Male	457	91.2%	87.5%	85.6%	86.8%		
2006-07	Total	626	89.5%	85.5%	84.5%			
	Female	151	86.8%	81.5%	80.8%			
	Male	475	90.3%	86.7%	85.7%			
2007-08	Total	572	*93.4%	*90.6%				
	Female	113	88.5%	85.5%				
	Male	459	94.6%	91.9%				
2008-09	Total	653	*92.8%					
	Female	147	93.8%					
	Male	506	92.6%					

* significant difference ($p \leq 0.05$)

**Georgia Institute of Technology
Institutional Research and Planning
Annual Transfer Student Retention Study**

Table 5. Retention Rates by Ethnicity.

Year	Transfer Cohort		Retention Rates (to next Fall term)					
	Ethnicity	n	2nd Yr	3rd Yr	4th Yr	5th Yr	6th Yr	7th Yr
1999-00	Total	547	84.1%	77.7%	*77.5%	76.6%	76.2%	*76.8%
	Asian	95	91.6%	86.3%	87.4%	85.3%	85.3%	87.2%
	Black/African-Am.	134	84.3%	73.9%	73.9%	71.6%	73.1%	70.9%
	Hispanic	21	90.5%	85.7%	85.7%	76.2%	76.2%	76.2%
	Native American	1	100.0%	100.0%	100.0%	100.0%	100.0%	100.0%
	Multi-Racial	11	100.0%	100.0%	81.8%	90.9%	90.9%	90.9%
	White/Caucasian	285	80.4%	75.1%	75.1%	75.4%	74.0%	75.5%
2000-01	Total	623	88.4%	82.3%	79.9%	78.8%	78.8%	79.5%
	Asian	113	88.5%	85.8%	79.7%	79.7%	78.6%	79.5%
	Black/African-Am.	137	88.3%	80.3%	78.1%	75.2%	75.4%	76.1%
	Hispanic	26	88.5%	84.6%	84.6%	84.6%	85.2%	85.2%
	Native American	0	na	na	na	na	na	na
	Multi-Racial	7	85.7%	81.5%	71.4%	71.4%	57.1%	57.1%
	White/Caucasian	340	88.5%	81.5%	80.6%	79.7%	80.2%	80.8%
2001-02	Total	627	89.0%	*81.8%	*80.5%	*80.2%	80.1%	79.7%
	Asian	120	91.7%	90.0%	86.7%	80.5%	84.2%	85.0%
	Black/African-Am.	112	84.8%	70.5%	70.5%	71.4%	71.4%	72.3%
	Hispanic	31	90.3%	77.4%	83.9%	90.3%	83.9%	83.9%
	Native American	2	100.0%	100.0%	100.0%	100.0%	100.0%	100.0%
	Multi-Racial	1	100.0%	100.0%	100.0%	100.0%	100.0%	100.0%
	White/Caucasian	361	89.2%	82.8%	81.1%	80.2%	80.7%	79.8%
2002-03	Total	568	90.8%	82.9%	79.4%	80.6%	79.4%	80.3%
	Asian	122	91.8%	82.0%	75.0%	78.2%	76.2%	76.2%
	Black/African-Am.	112	91.1%	79.5%	77.0%	75.2%	75.9%	76.8%
	Hispanic	35	91.4%	88.6%	83.8%	78.4%	80.0%	85.7%
	Native American	2	100.0%	100.0%	100.0%	100.0%	100.0%	100.0%
	Multi-Racial	2	100.0%	100.0%	67.6%	66.7%	50.0%	50.0%
	White/Caucasian	295	90.2%	83.7%	81.7%	84.1%	82.0%	82.7%
2003-04	Total	655	91.0%	*85.0%	*82.6%	*83.2%	*83.8%	83.7%
	Asian	142	95.1%	90.1%	85.9%	89.4%	90.1%	90.3%
	Black/African-Am.	125	88.8%	72.8%	70.4%	73.6%	73.6%	71.8%
	Hispanic	43	90.7%	86.4%	84.1%	81.4%	83.7%	82.5%
	Native American	1	100.0%	100.0%	100.0%	100.0%	100.0%	100.0%
	Multi-Racial	3	100.0%	66.7%	100.0%	100.0%	100.0%	100.0%
	White/Caucasian	341	90.0%	87.4%	85.3%	84.2%	84.8%	85.0%
2004-05	Total	720	90.4%	*84.9%	*81.7%	82.1%	*82.2%	
	Asian	161	91.9%	87.0%	82.6%	85.1%	86.1%	
	Black/African-Am.	109	88.1%	72.5%	72.5%	73.4%	71.2%	
	Hispanic	38	97.4%	94.7%	89.5%	86.8%	90.7%	
	Native American	2	100.0%	100.0%	100.0%	100.0%	100.0%	
	Multi-Racial	5	80.0%	80.0%	80.1%	80.0%	100.0%	
	White/Caucasian	405	89.9%	86.4%	83.0%	82.7%	82.3%	

(continued)

**Georgia Institute of Technology
Institutional Research and Planning
Annual Transfer Student Retention Study**

Table 5. Retention Rates by Ethnicity (continued).

Year	Transfer Cohort		Retention Rates (to next Fall term)					
	Ethnicity	n	2nd Yr	3rd Yr	4th Yr	5th Yr	6th Yr	7th Yr
2005-06	Total	592	*90.9%	88.2%	85.8%	86.6%		
	Asian	115	93.0%	88.7%	87.8%	87.7%		
	Black/African-Am.	81	85.2%	80.3%	79.0%	81.2%		
	Hispanic	39	82.1%	92.3%	84.6%	86.9%		
	Native American	1	100.0%	100.0%	100.0%	100.0%		
	Multi-Racial	2	100.0%	100.0%	100.0%	100.0%		
	White/Caucasian	354	92.4%	89.3%	86.7%	87.2%		
2006-07	Total	626	89.5%	85.5%	84.5%			
	Asian	120	90.0%	87.5%	87.1%			
	Black/African-Am.	88	90.9%	80.7%	80.7%			
	Hispanic	60	86.7%	86.7%	85.0%			
	Native American	2	100.0%	100.0%	100.0%			
	Multi-Racial	1	100.0%	100.0%	0.0%			
	White/Caucasian	352	89.2%	85.5%	84.4%			
Unknown	3	100.0%	100.0%	100.0%				
2007-08	Total	572	93.4%	*90.6%				
	Asian	111	97.3%	95.4%				
	Black/African-Am.	65	92.3%	85.7%				
	Hispanic	54	94.4%	94.5%				
	Native American	2	100.0%	44.4%				
	Multi-Racial							
	White/Caucasian	332	92.2%	90.1%				
Unknown	8	87.5%	74.1%					
2008-09**	Total	653	92.8%					
	Am. Indian/Alaskan	2	100.0%					
	Asian	85	94.9%					
	Black/Afr.Am.	76	92.3%					
	Hispanic/Latino	55	95.2%					
	International	43	91.5%					
	Two/More Races	24	96.0%					
	Unknown	13	100.0%					
White	355	91.7%						

* significant difference ($p \leq 0.05$), when Native American, Undisclosed and Multi-Racial excluded

**Due to a change in federal guidelines regarding race/ethnicity reporting, the 2008-09 cohort and all future cohort ethnicity breakouts are slightly different from pre -2008 cohorts.

**Georgia Institute of Technology
Institutional Research and Planning
Annual Transfer Student Retention Study**

Table 6. Retention Rates by Entering College.

Transfer Cohort			Retention Rates (to next Fall term)					
Year	Entering College	n	2nd Yr	3rd Yr	4 th Yr	5th Yr	6th Yr	7th Yr
1999-00	Total	547	84.1%	*77.7%	77.5%	76.6%	76.2%	76.8%
	Architecture	15	100.0%	93.3%	93.3%	86.7%	93.3%	93.3%
	Computing	53	84.9%	77.4%	73.6%	73.6%	73.6%	73.6%
	Engineering	381	84.0%	79.0%	78.0%	76.9%	76.9%	77.2%
	Ivan Allen	10	80.0%	40.0%	80.0%	80.0%	60.0%	60.0%
	Management Sciences	41	90.2%	85.4%	82.9%	85.4%	82.9%	87.8%
2000-01	Total	623	88.4%	82.3%	*79.9%	*78.8%	*78.8%	*79.5%
	Architecture	19	89.5%	89.5%	84.2%	84.2%	84.2%	84.2%
	Computing	96	89.6%	82.3%	77.1%	75.0%	74.0%	72.9%
	Engineering	401	90.8%	84.0%	82.8%	81.6%	81.5%	82.5%
	Ivan Allen	17	88.2%	82.4%	82.4%	76.5%	76.5%	82.4%
	Management Sciences	48	89.6%	81.3%	77.1%	79.2%	81.3%	81.3%
2001-02	Total	627	89.0%	81.8%	80.5%	80.2%	80.1%	79.7%
	Architecture	22	95.5%	86.4%	86.4%	81.8%	86.4%	86.4%
	Computing	110	86.4%	80.9%	80.9%	79.1%	78.2%	77.3%
	Engineering	390	90.0%	82.1%	80.3%	81.3%	80.8%	80.5%
	Ivan Allen	19	94.7%	84.2%	84.2%	84.2%	84.2%	84.2%
	Management Sciences	30	90.0%	86.7%	90.0%	90.0%	86.7%	86.7%
2002-03	Total	568	90.8%	*82.9%	*79.4%	*80.6%	*79.4%	*80.3%
	Architecture	28	85.7%	89.3%	82.1%	78.6%	78.6%	82.1%
	Computing	64	82.8%	75.0%	68.8%	75.0%	70.3%	71.9%
	Engineering	386	92.2%	83.9%	81.3%	82.6%	81.4%	81.9%
	Ivan Allen	13	100.0%	84.6%	84.6%	84.6%	84.6%	84.6%
	Management Sciences	29	100.0%	96.6%	93.1%	93.1%	96.6%	96.6%
2003-04	Total	655	91.0%	85.0%	82.6%	83.2%	83.8%	83.7T
	Architecture	33	97.0%	90.9%	90.9%	90.9%	93.9%	91.3%
	Computing	57	93.0%	86.0%	84.2%	82.5%	84.2%	85.8%
	Engineering	474	90.7%	84.2%	81.6%	82.9%	83.5%	83.3%
	Ivan Allen	12	100.0%	83.3%	83.3%	83.3%	83.3%	82.7%
	Management Sciences	22	95.5%	95.5%	100.0%	95.5%	95.5%	95.9%
2004-05	Total	720	90.4%	*84.9%	*81.7%	82.1%	82.2%	
	Architecture	51	94.1%	88.2%	86.3%	84.3%	83.6%	
	Computing	57	93.0%	87.7%	84.2%	84.2%	83.9%	
	Engineering	495	89.7%	85.1%	82.0%	81.8%	82.2%	
	Ivan Allen	13	100.0%	100.0%	100.0%	100.0%	100.0%	
	Management Sciences	30	90.0%	93.3%	86.7%	93.3%	92.3%	
2005-06	Total	592	90.9%	88.2%	85.8%	86.6%		
	Architecture	31	96.8%	90.3%	90.3%	91.4%		
	Computing	25	92.0%	88.0%	92.0%	83.8%		
	Engineering	450	90.9%	88.2%	85.6%	87.0%		
	Ivan Allen	16	93.8%	93.8%	93.8%	94.3%		
	Management Sciences	18	88.9%	83.3%	83.3%	82.8%		
		52	86.5%	86.5%	80.8%	80.5%		

(continued)

**Georgia Institute of Technology
Institutional Research and Planning
Annual Transfer Student Retention Study**

Table 6. Retention Rates by Entering College (continued).

Year	Transfer Cohort		Retention Rates (to next Fall term)					
	Entering College	n	2nd Yr	3rd Yr	4 th Yr	5th Yr	6th Yr	7th Yr
2006-07	Total	626	89.5%	85.5%	84.5%			
	Architecture	34	94.1%	88.2%	92.4%			
	Computing	36	88.9%	88.9%	88.8%			
	Engineering	446	89.5%	85.9%	84.3%			
	Ivan Allen	14	100.0%	92.9%	91.8%			
	Management	28	100.0%	92.9%	93.4%			
	Sciences	68	80.9%	75.0%	74.2%			
2007-08	Total	572	93.4%	90.6%				
	Architecture	24	100.0%	95.2%				
	Computing	31	87.1%	86.0%				
	Engineering	419	94.0%	91.3%				
	Ivan Allen	22	95.5%	91.4%				
	Management	24	95.8%	91.0%				
	Sciences	52	86.5%	85.4%				
2008-09	Total	653	92.8%					
	Architecture	27	100.0%					
	Computing	41	84.4%					
	Engineering	472	93.5%					
	Ivan Allen	26	92.9%					
	Management	31	93.2%					
	Sciences	56	90.0%					

*significant difference ($p \leq 0.05$);

**Georgia Institute of Technology
Institutional Research and Planning
Annual Transfer Student Retention Study**

Table 7. Retention to the Second Year by Matriculation Term

Transfer Cohort	Matriculation Term						
	Total	Summer		Fall		Spring	
		%	N	%	N	%	N
1999-00	84.1%	na		83.0%	368	88.6%	93
2000-01	88.4%	84.3%	43	88.2%	381	90.7%	127
2001-02	*88.9%	75.8%	47	90.2%	376	90.6%	135
2002-03	90.8%	83.6%	46	90.6%	326	94.1%	144
2003-04	91.0%	88.7%	47	91.8%	382	89.8%	167
2004-05	90.7%	90.0%	54	90.4%	434	91.7%	165
2005-06	90.9%	87.1%	54	91.3%	358	91.3%	126
2006-07	89.5%	91.1%	51	89.2%	372	89.5%	137
2007-08	93.4%	95.4%	62	92.3%	338	95.0%	134
2008-09	92.8%	90.8%	56	93.3%	380	92.5%	170

*significant difference ($p \leq 0.05$)

Table 8. Retention to the Second Year by Class

Transfer Cohort	Entering Class								
	Total	Freshmen		Sophomore		Junior		Senior	
		%	N	%	N	%	N	%	N
1999-00	84.1%	87.5%	21	83.1%	236	83.2%	154	90.9%	50
2000-01	88.4%	93.9%	31	85.9%	274	89.7%	208	97.4%	38
2001-02	88.9%	86.7%	39	89.8%	291	88.0%	191	90.2%	37
2002-03	90.8%	84.0%	21	90.8%	257	92.4%	183	88.7%	55
2003-04	*91.0%	93.9%	31	87.6%	275	94.5%	222	93.2%	68
2004-05	*90.7%	66.7%	16	91.6%	294	91.4%	288	91.7%	55
2005-06	90.9%	80.0%	8	89.6%	225	92.5%	248	90.5%	57
2006-07	89.5%	100.0%	13	90.0%	243	89.0%	258	86.8%	46
2007-08	*93.4%	72.7%	8	93.1%	202	94.8%	276	90.6%	48
2008-09	92.8%	82.1%	4	93.2%	224	93.1%	319	90.8%	59

*significant difference ($p \leq 0.05$)

Table 9. Retention to the Second Year by State Residency and Citizenship

Transfer Cohort	Total	Georgia Residency				Citizenship			
		In-State		Out-of-State		US Citizen		Non-Citizen	
		%	N	%	N	%	N	%	N
1999-00	*84.1%	82.3%	289	87.2%	172	83.2%	392	89.6%	69
2000-01	88.4%	87.4%	381	90.9%	170	87.9%	495	93.3%	56
2001-02	88.9%	88.9%	408	88.8%	150	88.2%	493	94.1%	64
2002-03	90.8%	90.3%	362	92.2%	154	90.5%	446	93.3%	70
2003-04	91.0%	91.8%	427	89.0%	169	90.9%	527	92.0%	69
2004-05	*90.7%	91.9%	500	87.0%	153	90.5%	581	92.3%	72
2005-06	90.9%	90.8%	434	91.2%	104	90.6%	494	93.6%	44
2006-07	89.5%	88.8%	461	92.5%	99	88.8%	516	97.8%	44
2007-08	93.4%	92.8%	426	95.6%	108	93.0%	489	97.8%	45
2008-09	92.8%	93.1%	516	91.4%	90	92.9%	567	91.5%	39

* significant difference ($p \leq 0.05$)

**Georgia Institute of Technology
Institutional Research and Planning
Annual Transfer Student Retention Study**

Table 10. Graduation Rates by Admission Status.

Transfer Cohort			Graduation Rates (through Summer term)				
Year	Status	n	2 Yrs	3 Yrs	4 Yrs	5 Yrs	6 Yrs
1998-99	Total	603	*18.9%	*48.3%	*68.0%	*74.3%	*75.5%
	Dual Degree	70	60.0%	72.9%	75.7%	77.1%	78.6%
	RETP	88	25.0%	72.7%	85.2%	87.5%	87.5%
	Regular	371	8.9%	36.4%	60.9%	69.3%	70.9%
	2 nd Undergrad.	21	33.3%	66.7%	71.4%	71.4%	71.4%
	International	53	18.9%	50.9%	77.4%	84.9%	84.9%
1999-00	Total	547	*18.5%	*52.5%	*68.4%	*72.9%	74.8%
	Dual Degree	89	41.6%	74.2%	76.4%	77.5%	77.5%
	RETP	53	13.2%	58.5%	75.5%	79.3%	81.1%
	Regular	332	14.2%	46.4%	65.4%	70.8%	73.2%
	2 nd Undergrad.	11	0.0%	0.0%	18.2%	27.3%	27.3%
	International	62	16.1%	58.1%	75.8%	80.7%	82.5%
2000-01	Total	623	*16.1%	*54.3%	*72.1%	76.4%	78.7%
	Dual Degree	86	40.7%	75.6%	80.2%	80.2%	81.4%
	Internat. Dual	4	25.0%	100.0%	100.0%	100.0%	100.0%
	RETP	65	15.4%	69.2%	80.0%	80.0%	80.0%
	GTREP	12	58.3%	83.3%	91.7%	91.7%	100.0%
	Regular	385	9.4%	45.7%	68.6%	74.3%	76.6%
	2 nd Undergrad.	16	37.5%	50.0%	56.3%	68.8%	68.8%
	International	55	9.1%	54.6%	72.7%	78.2%	83.6%
2001-02	Total	627	13.1%	*49.1%	*69.7%	*76.7%	*78.3%
	Dual Degree	64	48.4%	70.3%	75.0%	76.6%	78.1%
	Internat. Dual	7	28.6%	71.4%	85.7%	85.7%	85.7%
	RETP	54	16.7%	63.0%	74.1%	79.6%	79.6%
	GTREP	17	47.1%	82.4%	100.0%	100.0%	100.0%
	Regular	396	5.1%	41.7%	66.9%	75.3%	77.3%
	2 nd Undergrad.	23	4.4%	34.8%	39.1%	39.1%	43.5%
	International	66	16.7%	56.1%	78.8%	89.4%	89.4%
2002-03	Total	568	*12.9%	*45.2%	*69.4%	*76.2%	*79.2%
	Dual Degree	57	31.6%	75.4%	78.9%	79.0%	78.9%
	Internat. Dual	2	50.0%	50.0%	50.0%	50.0%	50.0%
	RETP	41	29.3%	65.9%	85.4%	92.7%	97.6%
	GTREP	14	35.7%	92.9%	92.9%	92.9%	92.9%
	Regular	354	7.6%	36.2%	63.0%	71.5%	75.1%
	2 nd Undergrad.	19	15.8%	36.8%	52.6%	57.9%	63.2%
	International	81	8.6%	46.9%	82.7%	88.9%	90.1%
2003-04	Total	655	*13.3%	*52.1%	*75.7%	81.8%	*83.0%
	Dual Degree	54	18.5%	74.1%	79.6%	81.5%	81.7%
	Internat. Dual	1	100.0%	100.0%	100.0%	100.0%	100.0%
	RETP	65	21.5%	72.3%	89.2%	90.8%	90.1%
	GTREP	37	59.5%	83.8%	89.2%	89.2%	88.9%
	Regular	409	6.4%	43.8%	72.1%	79.0%	91.1%
	2 nd Undergrad.	13	23.1%	61.5%	69.2%	92.3%	93.6%
	International	76	14.5%	46.1%	75.0%	81.6%	84.1%

(continued)

**Georgia Institute of Technology
Institutional Research and Planning
Annual Transfer Student Retention Study**

Table 10. Graduation Rates by Admission Status (continued).

Year	Transfer Cohort		Graduation Rates (through Summer term)				
	Status	n	2 Yrs	3 Yrs	4 Yrs	5 Yrs	6 Yrs
2004-05	Total	720	*13.8%	*50.7%	*74.0%	*80.6%	
	Dual Degree	42	40.5%	71.4%	76.2%	81.4%	
	Internat. Dual	4	25.0%	75.0%	75.0%	100.0%	
	RETP	85	18.8%	63.5%	80.0%	83.9%	
	GTREP	45	44.4%	75.6%	82.2%	83.4%	
	Regular	447	7.4%	43.0%	72.5%	79.5%	
	2 nd Undergrad.	16	18.8%	25.0%	43.8%	53.5%	
	International	81	11.1%	59.3%	76.5%	84.3%	
2005-06	Total	592	*15.4%	*55.4%	*77.3%		
	Dual Degree	31	45.2%	80.6%	83.9%		
	Internat. Dual	1	100.0%	100.0%	100.0%		
	RETP	102	15.7%	58.8%	79.5%		
	GTREP	40	52.5%	85.0%	90.1%		
	Regular	356	8.7%	48.9%	73.9%		
	2 nd Undergrad.	10	0.0%	30.0%	38.4%		
	International	52	15.4%	59.6%	88.5%		
2006-07	Total	626	*12.5%	*54.7%			
	Dual Degree	33	24.2%	70.3%			
	Internat. Dual	4	50.0%	75.5%			
	RETP	99	12.1%	62.2%			
	GTREP	46	34.8%	82.3%			
	Regular	386	8.5%	46.9%			
	2 nd Undergrad.	13	0.0%	47.5%			
	International	45	15.6%	67.2%			
2007-08	Total	572	*15.5%				
	Dual Degree	31	26.4%				
	Internat. Dual	3	100.0%				
	RETP	89	12.9%				
	GTREP	56	47.4%				
	Regular	343	8.9%				
	2 nd Undergrad.	5	21.0%				
	International	45	18.0%				

* significant difference ($p \leq 0.05$)

**Georgia Institute of Technology
Institutional Research and Planning
Annual Transfer Student Retention Study**

Table 11. Graduation Rates by Gender.

Transfer Cohort			Graduation Rates (through Summer term)				
Year	Gender	n	2 Yrs	3 Yrs	4 Yrs	5 Yrs	6 Yrs
1998-99	Total	603	18.9%	48.3%	68.0%	74.3%	75.5%
	Female	191	16.2%	43.5%	66.0%	71.7%	71.7%
	Male	412	20.1%	50.5%	68.9%	75.5%	77.2%
1999-00	Total	547	18.5%	52.5%	68.4%	72.9%	75.0%
	Female	159	22.6%	58.5%	72.3%	74.2%	75.3%
	Male	388	16.8%	50.0%	66.8%	72.4%	74.8%
2000-01	Total	623	*16.1%	*54.3%	*72.1%	76.4%	78.7%
	Female	161	24.2%	64.0%	78.9%	80.1%	83.2%
	Male	462	13.2%	50.9%	69.7%	75.1%	77.1%
2001-02	Total	627	13.1%	49.1%	69.7%	76.7%	78.3%
	Female	162	17.3%	53.1%	71.6%	75.3%	75.9%
	Male	465	11.6%	47.7%	69.0%	77.2%	79.1%
2002-03	Total	568	12.9%	45.2%	69.4%	79.4%	79.2%
	Female	153	14.4%	43.5%	71.4%	77.8%	77.8%
	Male	415	12.3%	45.9%	68.6%	80.0%	79.8%
2003-04	Total	655	13.3%	52.1%	75.7%	81.5%	83.0%
	Female	152	13.8%	52.6%	73.0%	79.6%	82.4%
	Male	503	13.1%	51.9%	76.5%	82.1%	83.2%
2004-05	Total	720	13.8%	50.7%	74.0%	80.6%	
	Female	180	11.7%	50.6%	74.4%	83.1%	
	Male	540	14.4%	50.7%	73.9%	79.7%	
2005-06	Total	592	15.4%	55.4%	77.3%		
	Female	135	14.8%	60.7%	75.6%		
	Male	457	15.5%	53.8%	77.9%		
2006-07	Total	626	12.5%	54.7%			
	Female	151	11.3%	52.2%			
	Male	475	12.8%	55.5%			
2007-08	Total	572	15.5%				
	Female	113	12.4%				
	Male	459	16.3%				

* significant difference ($p \leq 0.05$)

**Georgia Institute of Technology
Institutional Research and Planning
Annual Transfer Student Retention Study**

Table 12. Graduation Rates by Ethnicity.

Year	Transfer Cohort		Graduation Rates (through Summer term)				
	Ethnicity	n	2 Yrs	3 Yrs	4 Yrs	5 Yrs	6 Yrs
1998-99	Total	603	*18.9%	48.3%	68.0%	74.3%	75.5%
	Asian	105	9.5%	41.9%	64.8%	79.1%	81.0%
	Black/African-Am.	129	31.0%	55.0%	68.2%	71.3%	73.6%
	Hispanic	24	25.0%	50.0%	79.2%	83.3%	83.3%
	Native American	2	0.0%	50.0%	100.0%	100.0%	100.0%
	Multi-Racial	12	0.0%	33.3%	58.3%	75.0%	75.0%
	White/Caucasian	331	17.5%	48.0%	68.3%	73.1%	73.7%
1999-00	Total	547	*18.5%	52.5%	68.4%	72.9%	75.0%
	Asian	95	12.6%	53.7%	74.7%	80.0%	84.0%
	Black/African-Am.	134	26.9%	55.2%	67.9%	70.2%	70.1%
	Hispanic	21	23.8%	57.1%	61.9%	66.7%	71.4%
	Native American	1	0.0%	0.0%	100.0%	100.0%	100.0%
	Multi-Racial	11	18.2%	72.7%	90.9%	90.9%	90.9%
	White/Caucasian	285	16.1%	49.8%	66.0%	71.6%	73.8%
2000-01	Total	623	*16.1%	54.3%	72.1%	76.4%	78.7%
	Asian	113	10.6%	48.7%	70.8%	75.9%	79.5%
	Black/African-Am.	137	29.9%	59.9%	67.9%	73.2%	75.4%
	Hispanic	26	15.4%	61.5%	65.4%	81.5%	85.2%
	Native American	0	na	na	na	na	na
	Multi-Racial	7	0.0%	28.6%	57.1%	57.1%	57.1%
	White/Caucasian	340	12.7%	53.8%	75.0%	77.9%	79.6%
2001-02	Total	627	*13.1%	49.1%	69.7%	76.7%	78.3%
	Asian	120	4.2%	44.2%	71.7%	82.5%	84.2%
	Black/African-Am.	112	31.3%	56.3%	66.1%	69.6%	70.5%
	Hispanic	31	16.1%	58.1%	71.0%	80.6%	80.6%
	Native American	2	0.0%	100.0%	100.0%	100.0%	100.0%
	Multi-Racial	1	0.0%	100.0%	100.0%	100.0%	100.0%
	White/Caucasian	361	10.3%	47.2%	69.6%	76.3%	78.3%
2002-03	Total	568	*12.9%	45.2%	69.4%	76.2%	79.2%
	Asian	122	4.9%	34.7%	65.3%	72.1%	76.2%
	Black/African-Am.	112	16.1%	50.4%	69.9%	73.2%	75.9%
	Hispanic	35	8.6%	51.4%	75.7%	77.1%	80.0%
	Native American	2	50.0%	100.0%	100.0%	100.0%	100.0%
	Multi-Racial	2	50.0%	33.3%	66.7%	50.0%	50.0%
	White/Caucasian	295	14.9%	46.7%	69.9%	82.0%	81.7%
2003-04	Total	655	13.3%	52.1%	*75.7%	*81.5%	*83.0%
	Asian	142	9.2%	45.1%	77.5%	87.3%	88.9%
	Black/African-Am.	125	14.4%	51.2%	64.0%	68.8%	70.8%
	Hispanic	44	9.1%	54.5%	76.7%	83.7%	82.5%
	Native American	1	0.0%	100.0%	100.0%	100.0%	100.0%
	Multi-Racial	4	0.0%	50.0%	66.7%	100.0%	100.0%
	White/Caucasian	339	15.3%	54.9%	79.2%	83.3%	84.7%
2004-05	Total	720	13.8%	50.7%	74.0%	80.6%	
	Asian	161	9.3%	47.8%	75.8%	83.7%	
	Black/African-Am.	109	15.6%	43.1%	64.2%	71.2%	
	Hispanic	38	10.5%	63.2%	81.6%	85.5%	
	Native American	2	0.0%	100.0%	100.0%	100.0%	
	Multi-Racial	5	0.0%	40.0%	80.0%	100.0%	
	White/Caucasian	405	15.6%	52.6%	75.1%	81.0%	

(continued)

**Georgia Institute of Technology
Institutional Research and Planning
Annual Transfer Student Retention Study**

Table 12. Graduation Rates by Ethnicity (continued).

Year	Transfer Cohort		Graduation Rates (through Summer term)				
	Ethnicity	n	2 Yrs	3 Yrs	4 Yrs	5 Yrs	6 Yrs
2005-06	Total	592	15.4%	55.4%	77.3%		
	Asian	115	7.8%	49.6%	80.6%		
	Black/African-Am.	81	17.3%	56.8%	71.5%		
	Hispanic	39	10.3%	51.3%	71.7%		
	Native American	1	0.0%	100.0%	100.0%		
	Multi-Racial	2	50.0%	50.0%	100.0%		
	White/Caucasian	354	17.8%	57.3%	78.1%		
2006-07	Total	626	12.5%	54.7%			
	Asian	120	7.5%	52.3%			
	Black/African-Am.	88	9.1%	50.0%			
	Hispanic	60	11.7%	55.6%			
	Native American	2	0.0%	50.7%			
	Multi-Racial	1	0.0%	0.0%			
	White/Caucasian	352	15.3%	56.4%			
Unknown	3	0.0%	100.0%				
2007-08	Total	572	*15.5%				
	Asian	111	8.1%				
	Black/African-Am.	65	9.8%				
	Hispanic	54	20.5%				
	Native American	2	0.0%				
	Multi-Racial		0.0%				
	White/Caucasian	332	18.8%				
Unknown	8	0.0%					

* significant difference ($p \leq 0.05$), when Native American, Undisclosed, and Multi-Racial excluded

**Due to a change in federal guidelines regarding race/ethnicity reporting, the 2008-09 cohort and all future cohort ethnicity breakouts are slightly different from pre -2008 cohorts.

**Georgia Institute of Technology
Institutional Research and Planning
Annual Transfer Student Retention Study**

Table 13. Graduation Rates by Entering College.

Year	Transfer Cohort		Graduation Rates (through Summer term)				
	Entering College	n	2 Yrs	3 Yrs	4 Yrs	5 Yrs	6 Yrs
1998-99	Total	603	*18.9%	*48.3%	68.0%	*74.3%	75.5%
	Architecture	30	0.0%	13.3%	63.3%	73.3%	73.3%
	Computing	57	8.8%	47.4%	68.4%	71.9%	73.7%
	Engineering	430	22.3%	50.7%	70.5%	77.4%	78.1%
	Ivan Allen	13	30.8%	53.8%	61.5%	61.5%	69.2%
	Management	25	16.0%	48.0%	60.0%	64.0%	72.0%
	Sciences	48	10.4%	47.9%	54.2%	58.3%	58.3%
1999-00	Total	547	18.5%	52.5%	68.4%	72.9%	75.0%
	Architecture	15	6.7%	46.7%	66.7%	80.0%	86.7%
	Computing	53	13.2%	45.3%	66.0%	69.8%	71.7%
	Engineering	381	19.7%	55.1%	69.6%	74.5%	76.1%
	Ivan Allen	10	10.0%	40.0%	50.0%	50.0%	60.0%
	Management	41	29.3%	53.7%	73.2%	78.1%	82.9%
	Sciences	47	10.6%	42.6%	61.7%	61.7%	61.7%
2000-01	Total	623	16.1%	*54.3%	*72.1%	*76.4%	*78.7%
	Architecture	19	0.0%	26.3%	68.4%	78.9%	78.9%
	Computing	96	9.4%	46.9%	65.6%	69.8%	71.9%
	Engineering	401	18.5%	57.6%	75.3%	80.0%	82.0%
	Ivan Allen	17	23.5%	64.7%	76.5%	76.5%	82.4%
	Management	48	14.6%	58.3%	75.0%	75.0%	81.3%
	Sciences	42	14.3%	42.9%	52.4%	57.1%	57.1%
2001-02	Total	627	*13.1%	*49.1%	69.7%	76.7%	78.3%
	Architecture	22	0.0%	22.7%	68.2%	86.4%	86.4%
	Computing	110	5.5%	38.2%	60.9%	71.8%	74.6%
	Engineering	390	16.7%	53.1%	72.1%	77.7%	79.2%
	Ivan Allen	19	5.3%	47.4%	73.7%	84.2%	84.2%
	Management	30	10.0%	53.3%	80.0%	83.3%	86.7%
	Sciences	56	12.5%	51.8%	64.3%	69.6%	69.6%
2002-03	Total	568	*12.9%	*45.2%	*69.4%	*76.2%	*79.2%
	Architecture	28	0.0%	10.7%	64.3%	67.9%	78.6%
	Computing	64	7.8%	26.6%	51.6%	64.1%	70.3%
	Engineering	386	13.7%	49.0%	72.0%	78.8%	80.8%
	Ivan Allen	13	30.8%	61.5%	76.9%	84.6%	84.6%
	Management	29	24.1%	72.4%	89.7%	96.6%	96.6%
	Sciences	48	8.3%	39.6%	60.4%	62.5%	66.7%
2003-04	Total	655	*13.3%	52.1%	75.7%	81.5%	83.0%
	Architecture	33	0.0%	39.4%	81.8%	87.9%	91.3%
	Computing	57	5.3%	49.1%	77.2%	84.2%	85.8%
	Engineering	474	15.6%	53.4%	75.5%	81.0%	82.4%
	Ivan Allen	12	8.3%	41.7%	66.7%	83.3%	82.7%
	Management	22	18.2%	72.7%	95.5%	95.5%	95.9%
	Sciences	57	8.8%	45.6%	66.7%	75.4%	75.8%
2004-05	Total	720	*13.8%	*50.7%	74.0%	80.6%	
	Architecture	51	0.0%	31.4%	74.5%	83.6%	
	Computing	57	3.5%	42.1%	73.7%	79.2%	
	Engineering	495	15.6%	52.9%	73.7%	80.5%	
	Ivan Allen	13	30.8%	69.2%	92.3%	100.0%	
	Management	30	33.3%	70.0%	90.0%	92.3%	
	Sciences	74	8.1%	44.6%	66.2%	71.9%	

(continued)

**Georgia Institute of Technology
Institutional Research and Planning
Annual Transfer Student Retention Study**

Table 13. Graduation Rates by Entering College (continued).

Year	Transfer Cohort		Graduation Rates (through Summer term)				
	Entering College	n	2 Yrs	3 Yrs	4 Yrs	5 Yrs	6 Yrs
2005-06	Total	592	15.4%	*55.4%	77.3%		
	Architecture	31	0.0%	29.0%	72.6%		
	Computing	25	16.0%	40.0%	71.7%		
	Engineering	450	16.7%	58.4%	78.8%		
	Ivan Allen	16	25.0%	75.0%	88.5%		
	Management	18	22.2%	55.6%	77.8%		
	Sciences	52	7.7%	46.2%	67.0%		
2006-07	Total	626	*12.5%	54.7%			
	Architecture	34	5.9%	32.2%			
	Computing	36	0.0%	48.9%			
	Engineering	446	13.2%	57.1%			
	Ivan Allen	14	7.1%	48.2%			
	Management	28	25.0%	68.3%			
	Sciences	68	13.2%	50.1%			
2007-08	Total	572	15.5%				
	Architecture	24	0.0%				
	Computing	31	11.9%				
	Engineering	419	16.6%				
	Ivan Allen	22	13.7%				
	Management	24	19.4%				
	Sciences	52	14.7%				

* significant difference ($p \leq 0.05$)

**Georgia Institute of Technology
Institutional Research and Planning
Annual Transfer Student Retention Study**

Table 14. Graduation Rates by Co-Op Participation

Transfer Cohort			Graduation Rates (through Summer term)				
Year	Gender	n	2 Yrs	3 Yrs	4 Yrs	5 Yrs	6 Yrs
1998-99	Total	603	*18.9%	48.3%	68.0%	*74.3%	*75.5%
	Co-Op	138	5.1%	43.5%	70.3%	81.9%	82.6%
	Non Co-Op	465	23.0%	49.6%	67.2%	71.9%	73.2%
1999-00	Total	547	*18.5%	52.5%	*68.4%	*72.9%	*75.0%
	Co-Op	117	5.1%	43.6%	72.7%	81.2%	84.6%
	Non Co-Op	430	22.0%	55.0%	67.1%	70.5%	72.2%
2000-01	Total	623	*16.1%	*54.3%	72.1%	76.4%	78.7%
	Co-Op	132	3.8%	41.7%	73.5%	82.6%	83.3%
	Non Co-Op	491	19.4%	57.6%	71.7%	74.8%	77.4%
2001-02	Total	627	*13.1%	*49.1%	69.7%	*76.7%	*78.3%
	Co-Op	146	7.5%	41.8%	71.9%	83.6%	88.4%
	Non Co-Op	481	14.7%	51.2%	68.9%	74.5%	75.1%
2002-03	Total	568	*12.9%	*45.2%	69.4%	*76.2%	*79.2%
	Co-Op	178	7.3%	36.5%	74.7%	86.5%	89.3%
	Non Co-Op	390	15.4%	49.2%	66.9%	71.5%	74.1%
2003-04	Total	655	13.3%	52.1%	*75.7%	*81.5%	83.0%
	Co-Op	194	9.3%	52.6%	83.5%	89.2%	88.3%
	Non Co-Op	461	15.0%	51.8%	72.5%	77.9%	82.0%
2004-05	Total	720	*13.8%	50.7%	*74.0%	*80.6%	
	Co-Op	205	7.3%	48.8%	83.9%	89.6%	
	Non Co-Op	515	16.3%	51.5%	70.1%	79.0%	
2005-06	Total	592	*15.4%	55.4%	*77.3%		
	Co-Op	154	5.8%	58.4%	85.9%		
	Non Co-Op	438	18.7%	54.3%	76.0%		
2006-07	Total	626	*12.5%	54.7%			
	Co-Op	182	6.0%	50.0%			
	Non Co-Op	444	15.1%	55.5%			
2007-08	Total	572	*15.5%*				
	Co-Op	182	5.6%				
	Non Co-Op	444	17.3%				

* significant difference ($p \leq 0.05$)

**Georgia Institute of Technology
Institutional Research and Planning
Annual Transfer Student Retention Study**

Table 15. Six-Year Graduation Rates (through Summer term) by Matriculation Term

Transfer Cohort	Total	Matriculation Term					
		Summer		Fall		Spring	
		%	N	%	N	%	N
1999-00	74.8%	na		76.2%	337	68.9%	73
2000-01	78.7%	82.4%	42	78.9%	341	76.4%	107
2001-02	78.3%	70.5%	44	80.8%	337	74.5%	111
2002-03	79.2%	76.4%	42	80.6%	295	77.1%	119
2003-04	83.0%	87.0%	46	84.1%	350	79.7%	148

Table 16. Six-Year Graduation Rates (through Summer term) by Class.

Transfer Cohort	Total	Entering Class							
		Freshmen		Sophomore		Junior		Senior	
		%	N	%	N	%	N	%	N
1999-00	74.8%	79.2%	19	71.5%	203	77.2%	142	83.6%	46
2000-01	78.7%	66.7%	22	76.8%	245	81.5%	189	87.2%	34
2001-02	78.3%	75.6%	34	75.6%	245	82.0%	178	82.9%	35
2002-03	79.2%	72.0%	18	79.5%	225	80.3%	159	77.4%	48
2003-04	83.0%	91.3%	29	78.7%	248	86.6%	203	86.9%	64

* significant difference ($p \leq 0.05$)

Table 17. Six-Year Graduation Rates (through Summer term) by State Residency and Citizenship.

Transfer Cohort	Total	Georgia Residency				Citizenship			
		In-State		Out-of-State		US Citizen		Non-Citizen	
		%	N	%	N	%	N	%	N
1999-00	74.8%	72.4%	254	79.2%	156	73.7%	347	81.8%	63
2000-01	*78.7%	76.4%	333	84.0%	157	78.0%	439	85.0%	51
2001-02	*78.3%	75.6%	348	85.7%	144	76.5%	428	92.7%	64
2002-03	*79.2%	76.6%	307	85.6%	143	77.5%	382	90.7%	68
2003-04	83.0%	83.1%	388	82.8%	156	82.7%	480	85.2%	64

* significant difference ($p \leq 0.05$)